



GEZE HOSPITAL SLIDING DOOR SYSTEMS  
TARGETED SAFETY SOLUTIONS





**TABLE OF CONTENTS**

Introduction: GEZE - A tradition of innovation	<b>4</b>
GEZE hospital sliding door systems	<b>6</b>
Airtight sliding doors	<b>8</b>
Hermetical sliding doors	<b>9</b>
Technical description	<b>10</b>
Finishing materials	<b>11</b>
Control and safety devices	<b>11</b>
Accessories	<b>12</b>
References	<b>13</b>

## GEZE - A Tradition of Innovation

### Quality “Made in Germany”

GEZE GmbH is numbered amongst the world’s most successful suppliers of systems for door, window and security engineering. As one of the market leaders in innovation and design, the company, which was established in Stuttgart in 1863, develops, produces and distributes top quality technology that has had a major influence on building management systems. The products undergo further development in the company’s own technology centre.

GEZE stands for quality “Made in Germany”. Around the world. Which is why GEZE products are manufactured and installed in accordance with German quality standards. But the quality mark stands for much more. At GEZE, it is confirmed through innovations and a focus on the future, which are systematically supported and promoted. And this isn’t just reflected in the technology but also in terms of intelligent functionality, sustainability and unique design.

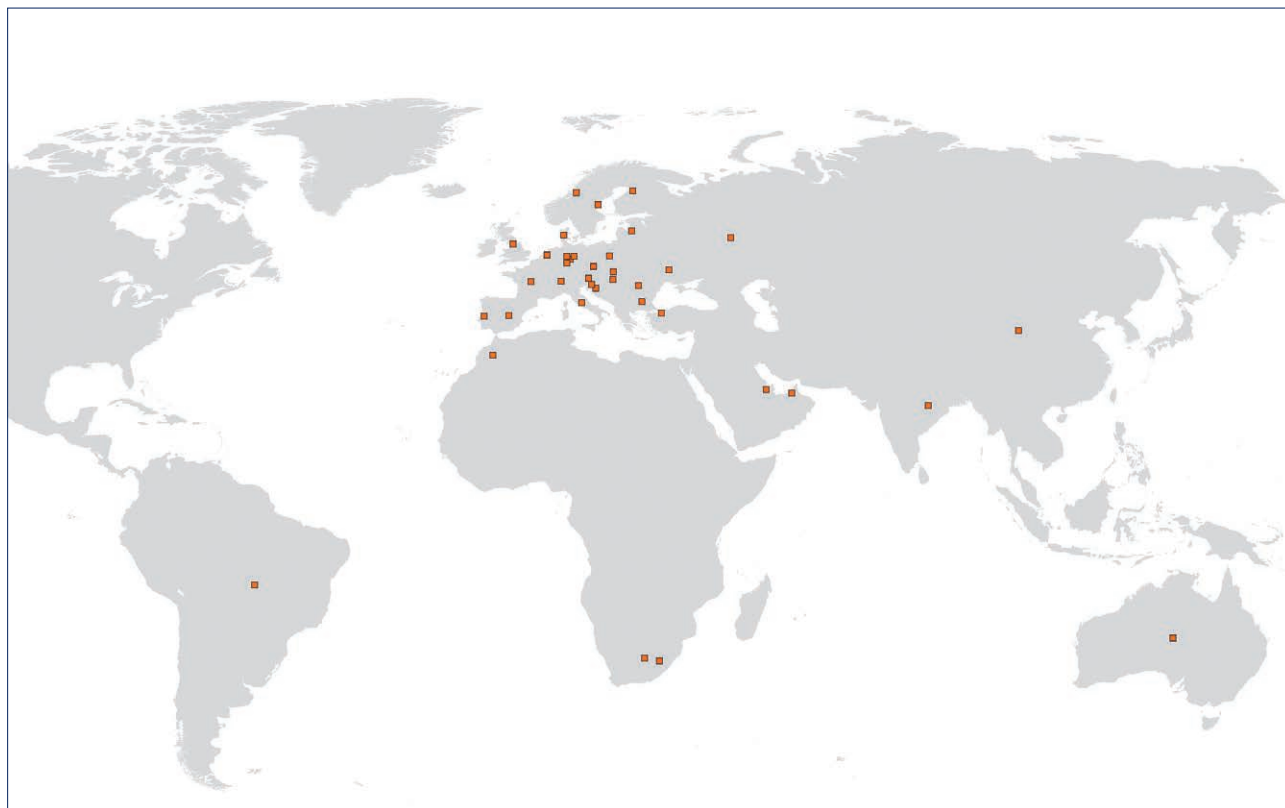
GEZE products and system solutions constantly undergo internal and external monitoring and have been awarded various internationally recognised approvals, test certificates and quality marks by both national and international institutes. These guarantee the high GEZE quality, not just in Germany but around the world.

### In step, locally and globally

GEZE’s headquarters have been in Leonberg, close to Stuttgart, since 1959, where over 900 highly qualified employees use knowledge and skills in the company’s own technology centre and state-of-the-art manufacturing plant. They work together using corporate know-how to create innovative and ground-breaking products. Leonberg and Germany will continue to provide the central development and manufacturing facilities going forward. GEZE also has production locations in China and Serbia, in order to be able to deliver to their customers around the world, in as timely a manner as possible. With 31 subsidiary companies and an extensive network of agents, GEZE is represented worldwide.

### GEZE locations

Asia-Pacific, Austria, Benelux, Brazil, China, Czech Republic, Croatia, France, Germany, Hungary, Iberia, India, Italy, Middle East, Poland, Romania, Russia, Scandinavia, Serbia, Slovenia, South Africa, Switzerland, Turkey, Ukraine and United Kingdom



## GEZE HOSPITAL SLIDING DOORS



### Accessibility, Safety, Comfort, Design

Whether in residential care homes, facilities for the disabled, hospitals or public buildings, the topic of accessibility in public buildings is here to stay. At the same time, reliable safety systems for personal protection and fire detection are essential in buildings where many people congregate together. GEZE creates accessible and comfortable solutions in combination with tailored standard solutions. And these are system-solutions, as the different GEZE components can be combined with each other as required.

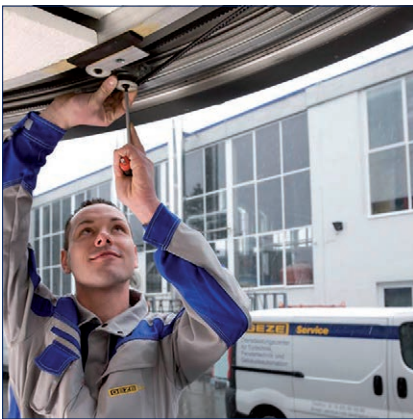
As well as safety and comfort, the look of the utilised technology plays a decisive role for architects and planners. With its new developments, GEZE is continually making moves towards creating an unobtrusive, low-key design - always with the goal of integrating intelligent technology attractively and discreetly into buildings.



### Sustainability

Working for the long-term has always been the GEZE way. As a family business, our focus is on achieving stable, long-lasting returns rather than short-term profit-maximisation. In order to secure our innovation power, we set great store on continuously developing the potential of our staff. They are the basis for the long-term success of the company, which helps to maintain jobs and to create new ones around the world. Global corporate activity also means global corporate responsibility. The company places the highest priority on continuously improving the ecology of our products and manufacturing facilities as well as on the responsible use of natural resources. GEZE works according to the latest environmental standards, our QM system has ISO 9001 certification.

GEZE products meet the DGNB (German Sustainable Building Council) and LEED (Leadership in Energy and Environmental Design) criteria for sustainable buildings. These certificates are amongst the most important indicators of the sustainability of a building.



### GEZE services

Reliable, competent and highly efficient customer service is one of our most important objectives when it comes to customer satisfaction. And this is why GEZE has a range of offerings for the service and maintenance of its own and third-party products. The regular servicing and qualified maintenance of automatic systems are essential to ensuring long-term personal and operational safety.

With GEZE Building Management, architects, specialist planners, general construction contractors and property developers benefit from targeted consultancy and a wide spectrum of related services. Our support starts with the draft planning and extends through to the completion of the building and beyond. We deliver detailed product information and coordinate the interfaces between the individual disciplines. This doesn't just save our customers money. It saves them time as well. In addition, we also offer an extensive programme of seminars, which give our customers the opportunity to find out about GEZE products, according to their needs.



### Standards

GEZE products such as hold-open systems, automatic door systems or natural ventilation systems (RWA), raise the comfort levels within a building. At the same time, they are also elements of a security concept. For this reason, planning and building legislation stipulates high normative requirements for the maintenance and installation staff when working on security-relevant door and window technology, both during installation and during the testing and maintenance of the equipment.

In order to ensure these high levels of qualification and the resulting optimum service, we train over 3000 service engineers every year in more than ten different specialist areas. They receive a GEZE certificate, which is valid for four years. As well as subjects such as general official building approvals for hold-open systems or regional and special building codes, the GEZE training plan also includes standards such as DIN 18650 for automatic door systems, the directive for electrical locking systems on escape route doors (ELTVTR) and safety at work.



## GEZE HOSPITAL SLIDING DOORS

---

### GEZE hospital sliding door systems

#### Safety and control

GEZE automatic and manual hospital sliding doors are space-saving, contemporary and recommended for use in workplaces where bacterial contamination is a potential issue. Glass sliding doors are ideal when it comes to making good use of daylight and where visual criteria have to be fulfilled. Automatic and manual sliding doors from GEZE can be used to implement the widest range of application requirements within a building.

GEZE hospital sliding doors can be easily incorporated in prefabricated systems and in conventional walls. They can be operated automatically or manually, with the sliding movement controlled manually by means of resin or stainless steel handles.

GEZE hospital sliding doors can be supplied in airtight and hermetically sealed versions.

#### Application range

- Operating rooms in hospitals and clinics
- Research rooms and laboratories
- Laboratories of the pharmaceutical or food industries

#### Benefits

- Controlled exchange of air
- No entering of foreign particles
- Saves energy



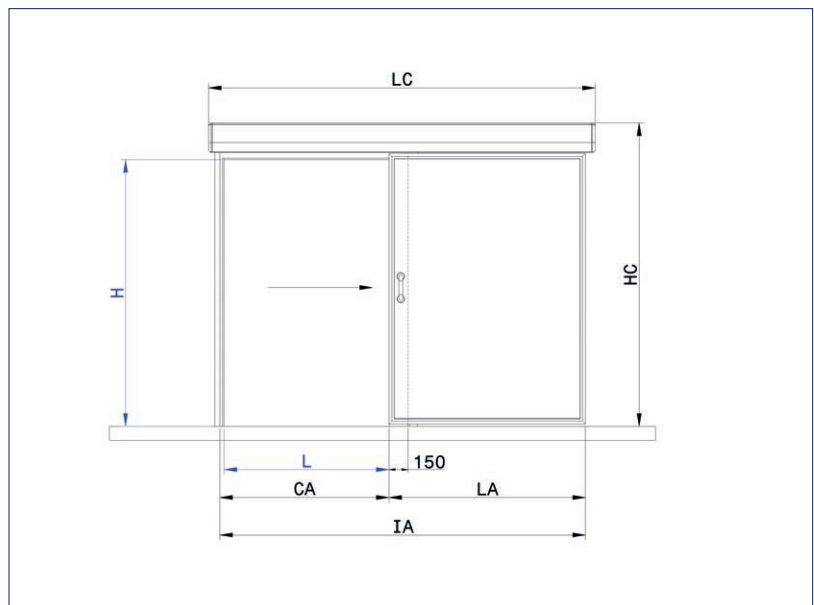
## GEZE HOSPITAL SLIDING DOORS

### Airtight sliding doors

GEZE airtight sliding doors are developed especially for use in clean-room areas and have a horizontal sliding movement. The seal is obtained on the two vertical sides with leaf gaskets which have an engagement on the vertical profiles applied on the door frame.

Sliding doors are used particularly in hospitals, clinics, in semi-conductor manufacturing facilities and production rooms in the food, chemical and pharmaceutical industries.

#### Airtight sliding door



#### Dimensional parameters

$L$  = Width - net useful opening  
 $H$  = Height - net useful opening  
 $CA$  = Opening stroke =  $L + 50$   
 $LA$  = Leaf width =  $L + 100$   
 $IA$  = Leaf footprint =  $(L \times 2) + 150$   
 $LC$  = Carter width =  $(L \times 2) + 300$   
 $HC$  = Carter height =  $H + 290$

#### Masonry wall applications

$L$ . Wall cutsize =  $L + 100$  mm  
 $H$ . Wall cutsize =  $H + 50$  mm

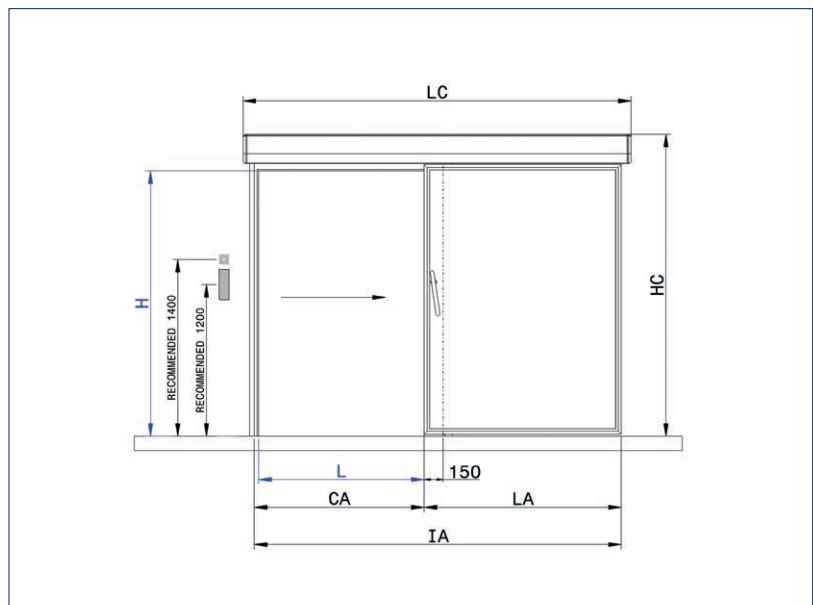


# GEZE HOSPITAL SLIDING DOORS

## Hermetical sliding doors

In clinically sterile rooms, the hermetical sliding doors provide a hygienic environment. They were designed for automating entrances to laboratories or operating rooms in hospitals. These sliding doors have a hermetic seal in the final part of their closure on the perimetrical profile. This happens due to the combined movement of sliding, vertical traverse and traverse in depth, making an approach to the frame and to the floor with a stroke up to 20 mm and an inclination of 45°. The vertical traverse and the one in depth are obtained thanks to the special manufacture of the support guide and the sliding of the casters without additional actuators. The hermetic seal, both on the perimetrical profile of the door opening and on the floor, is obtained from the compression of special gaskets installed on the perimeter of the door leaf. In the bottom part of the door leaf the shaped profile slides on two guide points ( "3rd and 4th point" ) that help to improve the hermetic seal.

### Hermetical sliding door



#### Dimensional parameters

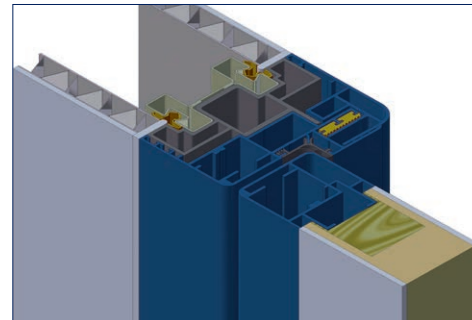
$L$  = Width - net useful opening  
 $H$  = Height - net useful opening  
 $CA$  = Opening stroke =  $L + 50$   
 $LA$  = Leaf width =  $L + 250$   
 $IA$  = Leaf footprint =  $(L \times 2) + 300$   
 $LC$  = Carter width =  $(L \times 2) + 450$   
 $HC$  = Carter height =  $H + 290$

#### Masonry wall applications

$L$ . Wall cutsize =  $L + 260$  mm  
 $H$ . Wall cutsize =  $H + 50$  mm

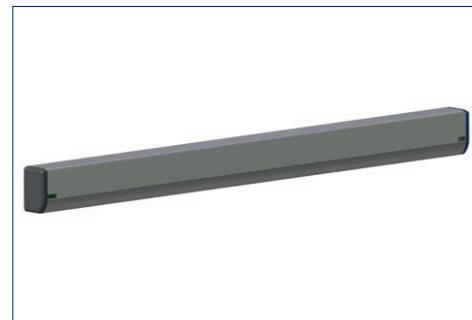
## Technical Description

Telescopic lining made in two parts: the frame profile and the subframe profile, made of extruded aluminium and/or stainless steel elements shaped with wide radius curves. The frame profile is equipped internally with specific grooves designed to accommodate the friction gasket that joins it to the subframe profile. In addition, the frame profile features a groove utilised for fixing purposes. The first groove is closed by means of a cover gasket that is completely coplanar with the frame profile. Thanks to special extensions in extruded aluminium, the frame can embrace different wall thicknesses.



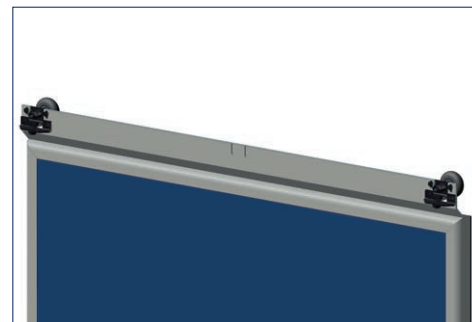
Lining

Housing profile to protect and cover the sliding mechanism made of extruded aluminium shaped with a wide radius curve without sharp edges or protrusions, to ensure ease of cleaning. The housing profile features a groove designed to receive the masking gasket that allows the complete closure of the lower side in correspondence with the top profile of the door leaf. The ends of the housing profile are fitted with end caps having an identical radius of curvature to the profile and performing a closing function. The housing profile allows easy maintenance that can be performed by a single operator.



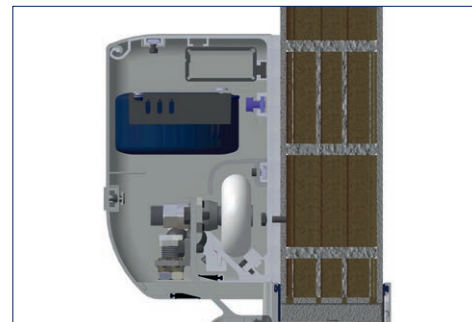
Housing

The door leaf is made of extruded aluminium profiles shaped with wide radius curves. The top profile of the door leaf is made with a special cross section that allows the direct application of the hanger kit without having to fit an adapter profile. A special extruded non-toxic silicone sealing gasket is mounted in a specific groove on the vertical profiles and top profile of the door leaf. A special dual component lower sealing gasket with lip facing the frame profile side is fitted in a specific groove on the bottom profile of the door leaf.



Leaf

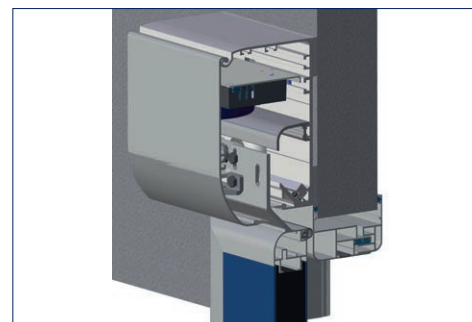
Horizontal and vertical sliding movements are achieved by means of a beam profile made of heavy gauge extruded aluminium with anodised finish, prearranged for secure fixing both on masonry walls and on prefabricated self-loading systems. The beam profile is designed to carry two hangers per leaf, each of which having a single nylon wheel running on ball bearings. The two hanger wheels are designed to guarantee silent operation and distribute the weight of the door leaf over the full length of the beam. The hangers enable adjustment of the door leaf in both a horizontal direction towards the frame profile and in a vertical direction to make it possible to adapt to floor level differences. The interior of the beam profile is also prearranged to receive an anti-derailing profile made of extruded aluminium. The travel limit stops are made with a specific extruded aluminium profile and equipped with rubber buffers. The floor track is made of Teflon coated steel.



Sliding mechanism

Automation for sliding doors, complete with:

- Operating system transmission with antistatic drive belt reinforced with Kevlar beads;
- 230 V AC – 50 Hz power supply with short-circuit protection;
- High-performance low-wear DC motor;
- Status signalling and fault indicator LEDs;
- Pause time for fully open door and for door with adjustable reduced opening dimension;
- Independent adjustable opening and closing speeds;
- Anti-crushing function with closing movement reversal and locking in open position;
- Battery powered emergency opening or closing.



Automation

## Finishing Materials

GEZE sliding door leaf panels are made with a variety of finishing materials:

- SMS® (SOLID MINERAL SURFACE) panel;
- ANTIBACTERIAL ENAMEL STEEL ASEPSI CERAMICSTEEL® panel;
- STAINLESS STEEL panel;
- PAINTED STAINLESS STEEL panel;
- HPL LAMINATE panel;
- STRATIFIED HPL LAMINATE panel;
- GLASS panel composed of security natural float glass 3 + 3 mm.

## Control and safety devices

The doors are equipped as standard with two large size elbow-operated pushbuttons, a pair of miniature safety photocells positioned to monitor the presence of obstacles on the threshold, backup battery unit for emergency opening during power outages and a key-type program selector.

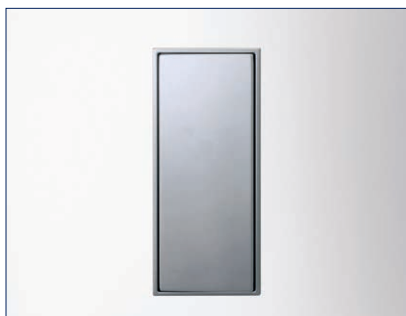
GEZE hospital sliding doors comply with the following European Council directives:

- Machinery Directive: 2006/42/EC and subsequent amendments and additions;
- Community Directive of Electromagnetic Compatibility: 92/31/CEE d.lgs 4/12/92 n°476 and subsequent amendments and additions;
- Low Voltage Directive: 2006/95/EC and subsequent amendments and additions.



## GEZE HOSPITAL SLIDING DOORS

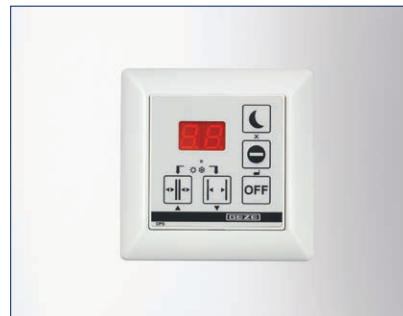
### Accessories



Elbow-operated pushbutton



Panic handle



GEZE Display Programme Switch DPS



GEZE LED Sensor switch



GEZE Finger Print GCFP 401



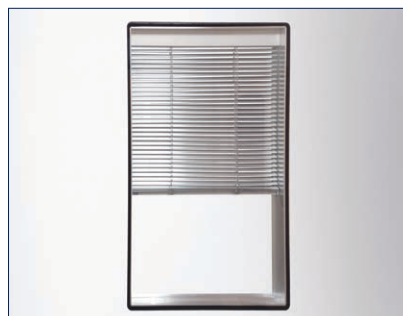
GEZE RFID-Reader GCVR 200



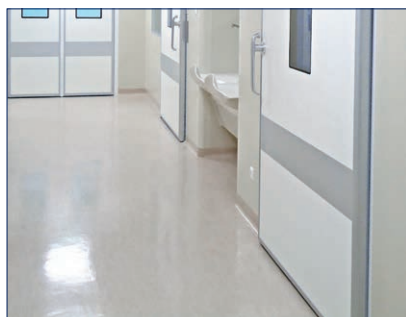
GEZE Combined detector GC 363 R



Control and safety sensor



Flush viewing window with blind



Crash rail

## References





# POTENTIAL APPLICATIONS OF GEZE PRODUCTS

You will find more product information in the relevant brochures, see ID numbers.

## Door technology

01	Overhead door closers ID 091593, ID 091594
02	Hold-open systems ID 091593, ID 091594
03	Integrated door closers ID 091609
04	Floor springs ID 091607
05	Sliding door gear systems and linear guides ID 123605, ID 008770, ID 000586

## Automatic door systems

06	Swing doors ID 144785
07	Sliding, telescopic and folding doors ID 143639
08	Circular and semi-circular sliding doors ID 135772
09	Revolving doors ID 132050
10	Actuation devices and sensors ID 142655

## Smoke and heat extraction and window technology

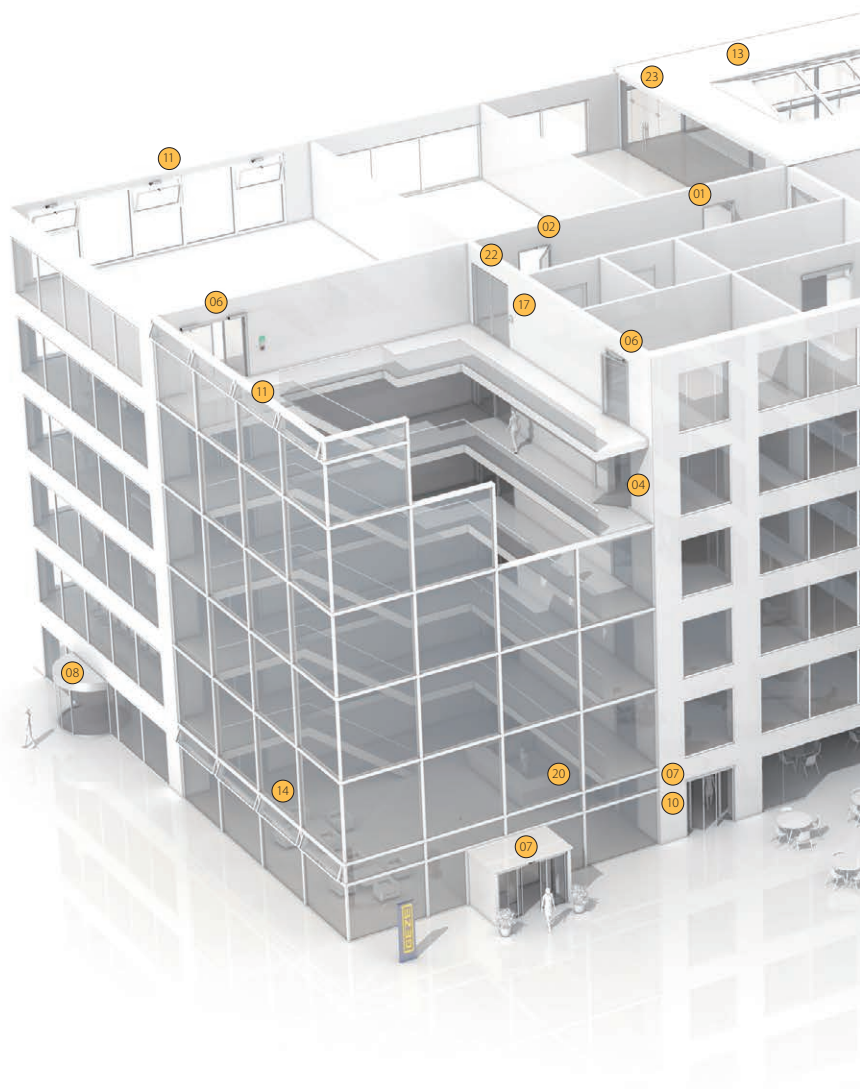
11	Fanlight opening systems ID 127787
12	Electric opening and locking systems ID 154851
13	Electrical spindle and linear drives ID 154851
14	Electric chain drives ID 154851
15	Smoke and heat extraction systems ID 154851

## Safety technology

16	Emergency exit systems ID 132408
17	Access control systems ID 132158
18	Panic locks ID 132848
19	Electric strikes ID 148666
20	Building management system ID 132408

## Glass systems

21	Manual sliding wall systems (MSW) ID 104377
22	Integrated all-glass systems (IGG) ID 104366
23	GEZE Patch fittings mono glass systems ID 122521



# POTENTIAL APPLICATIONS OF GEZE PRODUCTS



## Door technology

The functionality, superior performance and reliability of GEZE door closers are impressive. A common design across the range, the ability to use them on all common door leaf widths and weights, and the fact that they can be individually adjusted makes their selection simple. They are continually being improved and enhanced with up-to-date features. For example, the requirements of fire protection and accessibility are fulfilled with a door closer system.

## Automatic door systems

GEZE automatic door systems open up a huge variety of options in door design. The latest, innovative high-performance drive technology, safety, ease of accessibility and first class universal drive design set them apart. GEZE offers complete solutions for individual requirements. A dedicated division is responsible for the development and construction of individual special designs.

## Smoke and heat extraction and window technology

GEZE smoke and heat extraction systems and ventilation technology provide complete systems solutions combining the many requirements of different types of windows. We supply a full range from energy efficient drive systems to natural ventilation and complete solutions for supplying and extracting air, also as certified SHEVs.

## Safety technology

GEZE safety technology sets the standards where preventative fire protection, access control and anti-theft security in emergency exits are concerned. For each of these objectives GEZE offers tailored solutions, which combine the individual safety requirements in one intelligent system and close doors and windows in case of danger in a coordinated manner.

## Building systems

In GEZE's Building Management System GEZE door, window and safety products can be integrated in to the security and control systems of the building. A central control and visualisation system monitors various automation components in the building and offers security through many different networking capabilities.

## Glass systems

GEZE glass systems stand for open and transparent interior design. They can either blend discreetly into the architecture of the building or stand out as an accentuated feature. GEZE offers a wide variety of technologies for functional, reliable and aesthetic sliding wall or sliding door systems providing security with lots of design scope.

**GEZE GmbH**  
P.O. Box 1363  
71226 Leonberg  
Germany

**GEZE GmbH**  
Reinhold-Vöster-Straße 21-29  
71229 Leonberg  
Germany  
Telefon +49 7152 203 0  
Telefax +49 7152 203 310  
www.geze.com

**Germany**  
GEZE GmbH  
Niederlassung Süd-West  
Breitwiesenstraße 8  
71229 Leonberg  
Tel. +49 7152 203 594  
Fax +49 7152 203 438  
leonberg.de@geze.com

GEZE GmbH  
Niederlassung Süd-Ost  
Parkring 17  
85748 Garching bei München  
Tel. +49 7152 203 6440  
Fax +49 7152 203 77050  
muenchen.de@geze.com

GEZE GmbH  
Niederlassung Ost  
Bühningstraße 8  
13086 Berlin (Weißensee)  
Tel. +49 7152 203 6840  
Fax +49 7152 203 76849  
berlin.de@geze.com

GEZE GmbH  
Niederlassung Mitte/Luxemburg  
Adenauerallee 2  
61440 Oberursel (b. Frankfurt)  
Tel. +49 7152 203 6888  
Fax +49 7152 203 6891  
frankfurt.de@geze.com

GEZE GmbH  
Niederlassung West  
Heltorfer Straße 12  
40472 Düsseldorf  
Tel. +49 7152 203 6770  
Fax +49 7152 203 76770  
duesseldorf.de@geze.com

GEZE GmbH  
Niederlassung Nord  
Haus 11, 1. OG - Theodorstr. 42-90  
22761 Hamburg-Bahrenfeld  
Tel. +49 7152 203 6600  
Fax +49 7152 203 76608  
hamburg.de@geze.com

GEZE Service GmbH  
Niederlassung Süd-West  
Reinhold-Vöster-Straße 25  
71229 Leonberg  
Tel. +49 1802 923392  
Fax +49 7152 9233 359  
service-leonberg.de@geze.com

GEZE Service GmbH  
Niederlassung Süd  
Parkring 17  
85748 Garching bei München  
Tel. +49 1802 923392  
Fax +49 7152 9233 859  
service-muenchen.de@geze.com

GEZE Service GmbH  
Niederlassung Mitte  
Oberurseler Str. 69  
61440 Oberursel  
Tel. +49 1802 923392  
Fax +49 7152 9233 659  
service-oberursel.de@geze.com

GEZE Service GmbH  
Niederlassung West  
Heltorfer Straße 12  
40472 Düsseldorf  
Tel. +49 1802 923392  
Fax +49 7152 9233 559  
service-duesseldorf.de@geze.com

GEZE Service GmbH  
Niederlassung Nord-Ost  
Bühningstraße 8  
13086 Berlin (Weißensee)  
Tel. +49 1802 923392  
Fax +49 7152 9233 759  
service-berlin.de@geze.com

GEZE Service GmbH  
Niederlassung Nord  
Theodorstr. 42-90, Haus 11  
22761 Hamburg  
Tel. +49 1802 923392  
Fax +49 7152 9233 459  
service-hamburg.de@geze.com

**Austria**  
GEZE Austria  
Wiener Bundesstrasse 85  
A-5300 Hallwang  
Tel: +43 6225 87180  
Fax: +43 6225 87180 299  
austria.at@geze.com

**Baltic States**  
GEZE GmbH Baltic States office  
Dzelzavas iela 120 S  
1021 Riga  
Tel. +371 678960 35  
Fax +371 678960 36  
office-latvia@geze.com

**Benelux**  
GEZE Benelux B.V.  
Industrieterrein Kapelbeemd  
Steenoven 36  
5626 DK Eindhoven  
Tel. +31 4026290 80  
Fax +31 4026290 85  
benelux.nl@geze.com

**Bulgaria**  
GEZE Bulgaria - Trade  
Representative Office  
Nickolay Haitov 34 str., fl. 1  
1172 Sofia  
Tel. +359 247043 73  
Fax +359 247062 62  
office-bulgaria@geze.com

**China**  
GEZE Industries (Tianjin) Co., Ltd.  
Shuangchenzhong Road  
Beichen Economic Development  
Area (BEDA)  
Tianjin 300400, P.R. China  
Tel. +86 22 26973995  
Fax +86 22 26972702  
chinasales@geze.com.cn

GEZE Industries (Tianjin) Co., Ltd.  
Branch Office Shanghai  
Jia Little Exhibition Center  
Room C 2-102  
Shenzhuan Rd. 6000  
201619 Shanghai, P.R. China  
Tel. +86 21 52340960  
Fax +86 21 64472007  
chinasales@geze.com.cn

GEZE Industries (Tianjin) Co., Ltd.  
Branch Office Guangzhou  
Room 17 C 3  
Everbright Bank Building, No.689  
Tian He Bei Road  
510630 Guangzhou, P.R. China  
Tel. +86 20 38731842  
Fax +86 20 38731834  
chinasales@geze.com.cn

GEZE Industries (Tianjin) Co., Ltd  
Branch Office Beijing  
Room 1001, Tower D  
Sanlitun SOHO  
No. 8, Gongti North Road,  
Chaoyang District  
100027 Beijing, P.R.China  
Tel. +86 10 59359300  
Fax +86 10 59359322  
chinasales@geze.com.cn

**France**  
GEZE France S.A.R.L.  
ZAC de l'Orme Rond  
RN 19  
77170 Servon  
Tel. +33 1 606260 70  
Fax +33 1 606260 71  
france.fr@geze.com

**Hungary**  
GEZE Hungary Kft.  
Hungary-2051 Biatorbágy  
Vendel Park  
Huber u. 1.  
Tel. +36 23532 735  
Fax +36 23532 738  
office-hungary@geze.com

**Iberia**  
GEZE Iberia S.R.L.  
C/ Andorra 24  
08830 Sant Boi de Llobregat  
(Barcelona)  
Tel. +34 902194 036  
Fax +34 902194 035  
info@geze.es

**India**  
GEZE India Private Ltd.  
MF 2 & 3, Guindy Industrial Estate  
Ekkattuthangal  
Chennai 600 097  
Tamilnadu  
Tel. +91 44 406169 00  
Fax +91 44 406169 01  
office-india@geze.com

**Italy**  
GEZE Italia S.r.l  
Sede di Milano  
Via Giotto 4  
20040 Cambiago (MI)  
Tel. +39 0295069 511  
Fax +39 0295069 533  
italia.it@geze.com

Sede di Roma  
Via Lucrezia Romana, 91  
00178 Roma  
Tel. +39 06 726531 1  
Fax +39 06 726531 36  
roma@geze.biz

**Poland**  
GEZE Polska Sp.z o.o.  
ul. Annapol 21  
03-236 Warszawa  
Tel. +48 224 404 440  
Fax +48 224 404 400  
geze.pl@geze.com

**Romania**  
GEZE Romania S.R.L.  
IRIDE Business Park,  
Str. Dimitrie Pompeiu nr. 9-9a,  
Building 10, Level 2, Sector 2,  
020335 Bucharest  
Tel.: +40 212507 750  
Fax: +40 316201 258  
office-romania@geze.com

**Russia**  
OOO GEZE RUS  
Gamsonovskiy Per. 2  
115191 Moskau  
Tel. +7 495 93306 59  
Fax +7 495 93306 74  
office-russia@geze.com

**Scandinavia - Sweden**  
GEZE Scandinavia AB  
Mallslingan 10  
Box 7060  
18711 Täby, Sweden  
Tel. +46 87323 400  
Fax +46 87323 499  
sverige.se@geze.com

**Scandinavia - Norway**  
GEZE Scandinavia AB avd. Norge  
Industriveien 34 B  
2073 Dal  
Tel. +47 63957 200  
Fax +47 63957 173  
norge.se@geze.com

**Singapore**  
GEZE (Asia Pacific) Pte. Ltd.  
21 Bukit Batok Crescent  
#23-75 Wcega Tower  
Singapore 658065  
Tel: +65 6846 1338  
Fax: +65 6846 9353  
gezesea@geze.com.sg

**South Africa**  
GEZE Distributors (Pty) Ltd.  
118 Richards Drive, Halfway House,  
Ext 111, P.O. Box 7934, Midrand 1685,  
South Africa  
Tel: +27 113158 286  
Fax: +27 113158 261  
info@gezesa.co.za

**Switzerland**  
GEZE Schweiz AG  
Zelglimatte 1A  
6260 Reiden  
Tel. +41 62 28554 00  
Fax +41 62 28554 01  
schweiz.ch@geze.com

**Turkey**  
GEZE Kapı ve Pencere Sistemleri  
San. ve Tic. Ltd. Sti.  
İstanbul Anadolu Yakası Organize  
Sanayi Bölgesi  
Gazi Bulvarı Caddesi 8.Sokak No:8  
Tuzla-İstanbul  
Tel. +90 216 45543 15  
Fax +90 216 45582 15  
office-turkey@geze.com

**Ukraine**  
LLC GEZE Ukraine  
ul. Viskoznaya, 17,  
Building 93-B, Office 12  
02660 Kiev  
Tel./Fax +38 445012225  
office-ukraine@geze.com

**United Arab Emirates/GCC**  
GEZE Middle East  
P.O. Box 17903  
Jebel Ali Free Zone  
Dubai  
Tel. +971 48833 112  
Fax +971 48833 240  
gezeme@geze.com

**United Kingdom**  
GEZE UK Ltd.  
Blenheim Way  
Fradley Park  
Lichfield  
Staffordshire WS13 8SY  
Tel. +44 15434430 00  
Fax +44 15434430 01  
info.uk@geze.com

**Scandinavia - Denmark**  
GEZE Danmark  
Branch office of GEZE Scandinavia AB  
Mårkærvej 13 J-K  
2630 Taastrup  
Tel. +45 463233 24  
Fax +45 463233 26  
danmark.se@geze.com

GEZE REPRESENTATIVE



(02) 6280 4655

Id.No. 159995 · Vers. EN 141031 · Subject to modification

Australasia - Australia  
Progressive Controls Pty Ltd  
3/129 Gladstone St,  
Fyshwick ACT 2609  
Tel. +61 2 6280 4655  
Fax +61 2 6280 7592  
sales@progressivecontrols.com.au  
www.progressivecontrols.com.au